




**More Than Just a Bump on the Noggin:
Traumatic
Brain Injury in the
Young Child**

PRESENTER
Mandy Tribe, M.A.

Don't Miss the Next Talks on Tuesdays!



AUDIO DETAILS:
1-866-842-5779
Enter Code: 463-661-9330



**Today's
Presenter**

Mandy Tribe M.A.
Educational Consultant
Hospital School Program
*Children's Hospital of the King's
Daughters*
Norfolk, VA

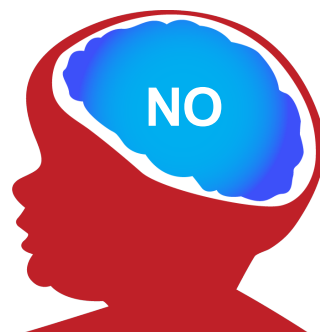


Brain injury vs. Concussion

Is a concussion a brain injury?

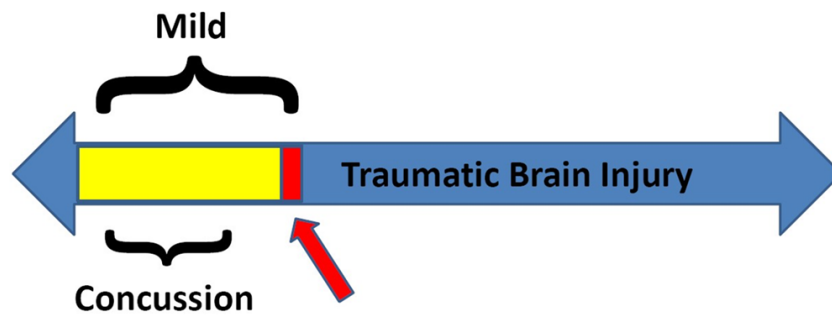


OR



Use your pointer tool to make your selection.

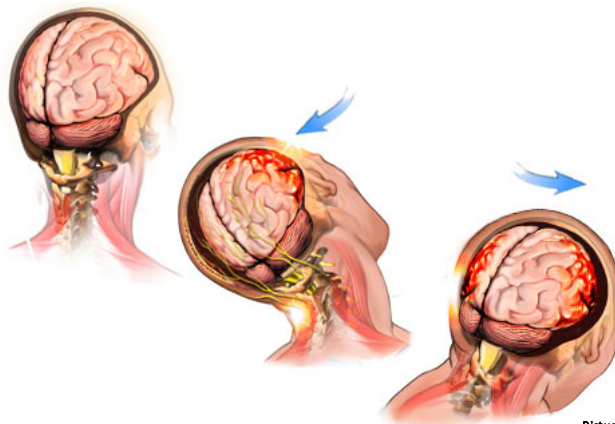
Concussion = Mild TBI



John Reynolds MS, ATC, VATL

A concussion...

Needs to be taken seriously



Picture from <http://www.webmd.com/>

A concussion...

Needs to be taken seriously

Risk for 2nd injury
is **3x** greater than
the general public

Risk for a 3rd is
8x greater

IMPACTS:

- Decision making
- Impulsivity
- Motor skills



- An **acquired** injury
- Caused by an external physical force
- An open or closed injury resulting in total or partial functional disability or psychosocial impairment, or both, that adversely affects a child's educational performance.

ACQUIRED Brain Injury (ABI)

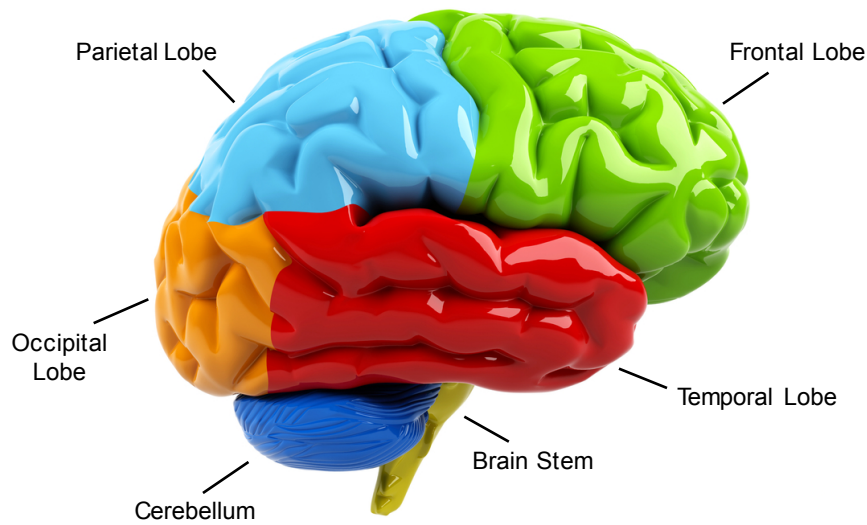
- Damage to the brain that occurs after birth
- A result of an internal cause such as a stroke, brain tumor, lack of oxygen to the brain (non-traumatic)
- A result of an external physical force that results in an open or closed injury (**traumatic or TBI**)



What happens during an injury to the brain?

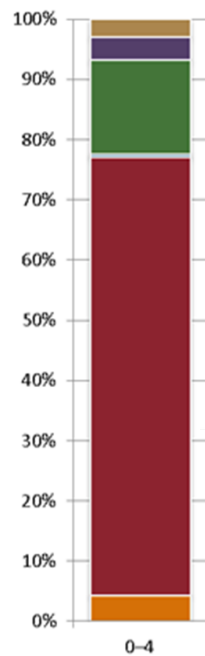


Lobes of the Brain



Which do you think is the most common cause of brain injury in children aged 0-4?

- a. Motor vehicle traffic
- b. Struck by/against an object
- c. Assault
- d. Falls

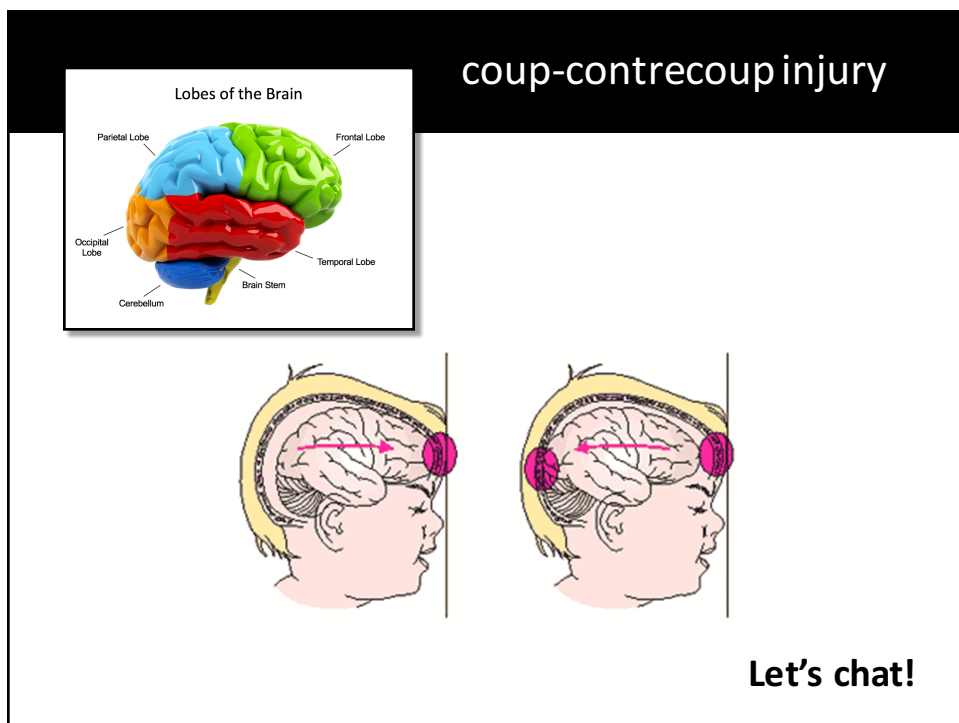


How do injuries occur?

Percent Distributions of TBI-related
Emergency Department Visits by Age
Group and Injury Mechanism —
United States, 2006-2010







Occipital lobe and Frontal lobe



<http://www.finr.net/educational-resources/finr-educational-materials/3d-brain/>

Other



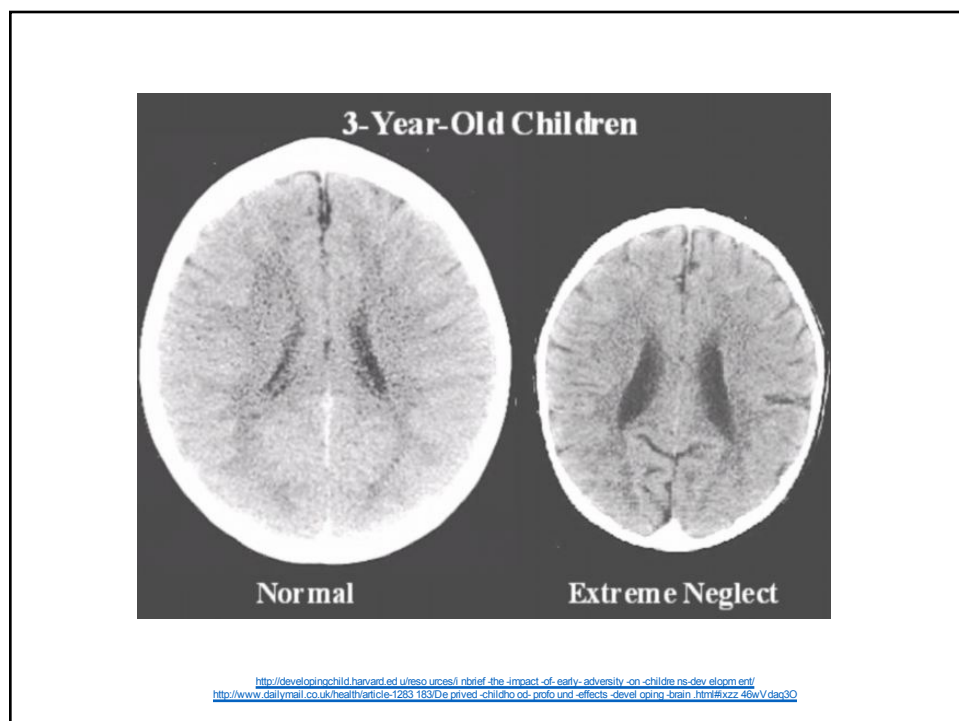
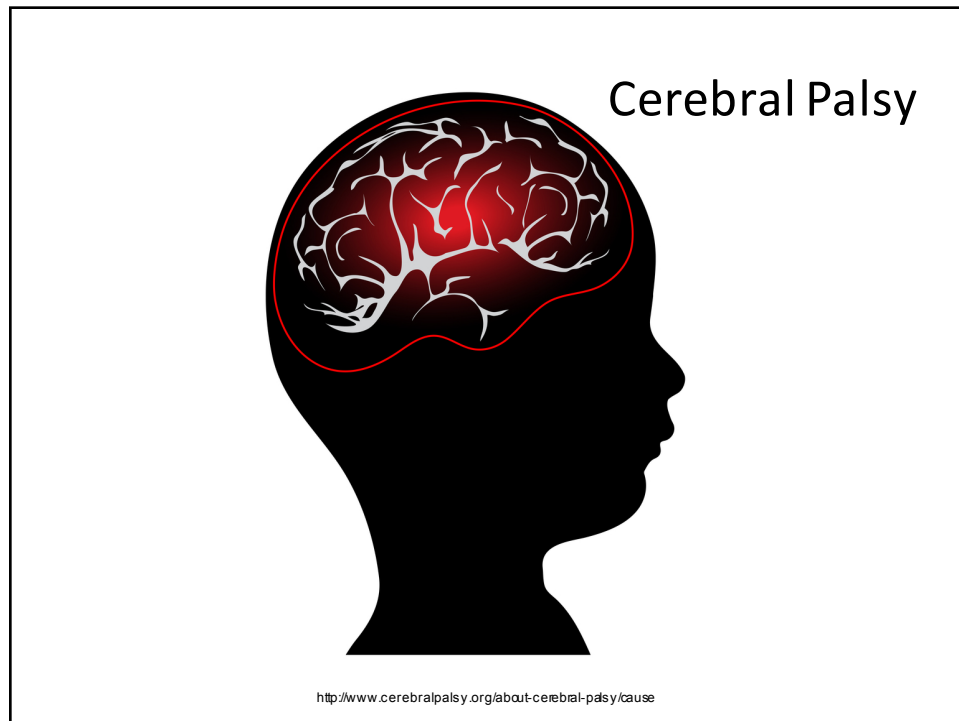
Tumor



Stroke



Hypoxia
or
Anoxia



Recognizing the Signs of TBI in the Young Child



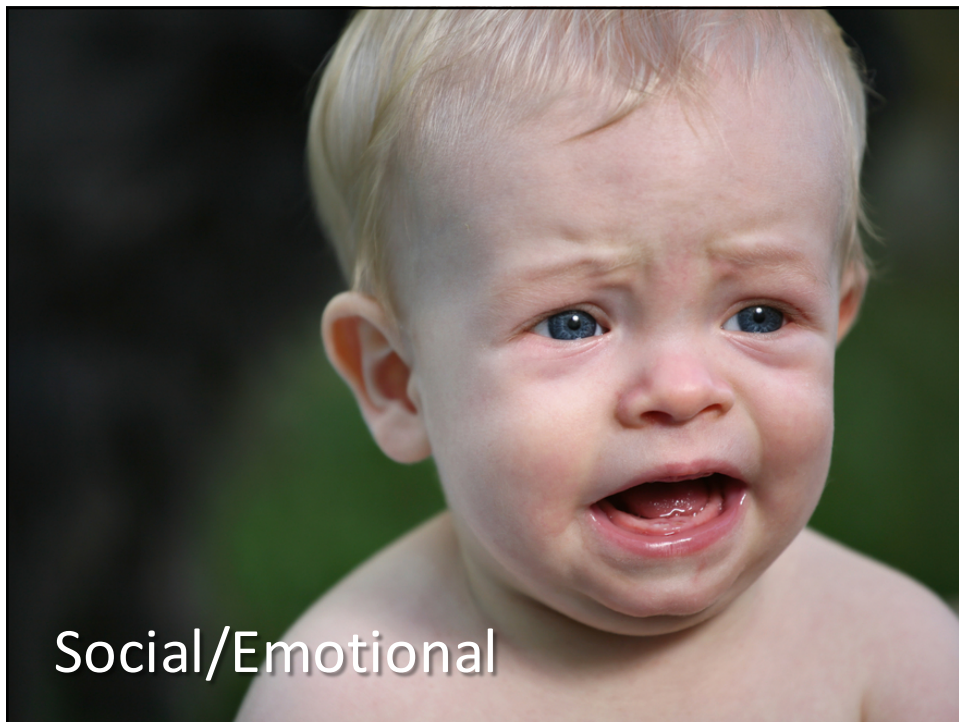
A TBI can
impact...







Physical and
Sensory Abilities



Social/Emotional

Who Is Most At Risk During Childhood?

- a. Age group 0-4 years
- b. Age group 15 to 24 years
- c. Age group 5-14 years

EI Eligibility



Infant & Toddler
Connection of Virginia

Recovery and Learning

Who is more likely to make a “better” recovery?

3 year old



17 year old



OR

Why the 17 year old?





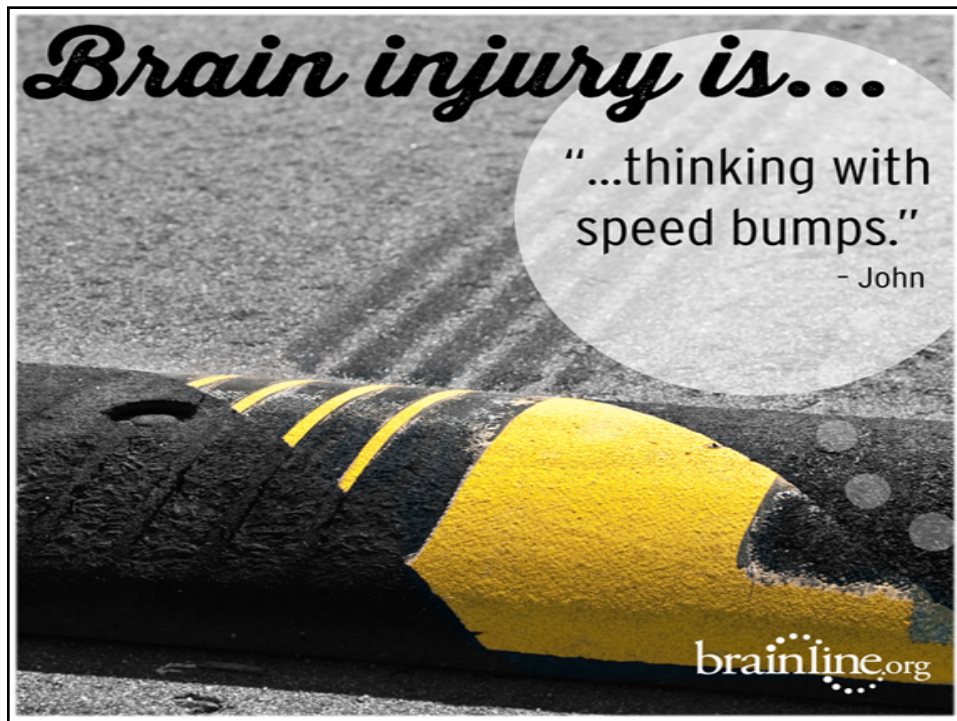
Recovery

- Injury
- Child
- Environment

Incidence in the Schools

- **LOW** incidence disability
- **SIGNIFICANTLY** under-identified disability
- Each year, approximately **one million children** sustain brain injuries





THANK YOU!

Mandy Tribe M.A.
Educational Consultant
Hospital School Program
Children's Hospital of the King's Daughters
Norfolk, VA
PH: (757) 668-7582
Fax: (757) 668-7811
Mandy.Tribe@chkd.org