



**Web Discussion**  
*Using a Primary Service Provider  
Approach to EI Service Delivery*

**Part 2**

PRESENTED BY  
Dana Childress, M.Ed.,  
Susan Sigler, CCC-SLP,  
& Tracy Shiplett, DPT

**March 1, 2016 • TALKS ON TUESDAYS WEBINAR**

 Partnership for People  
with Disabilities  
*Linking people. Changing lives.*

 Integrated  
Training  
collaborative

 **VCU**  
VIRGINIA COMMONWEALTH UNIVERSITY

**AUDIO DETAILS:**  
**1-866-842-5779**  
**Enter Code: 463-661-9330**

**MEET TODAY'S PRESENTERS**



**Dana Childress**

**EI Professional  
Development Consultant**  
Partnership for People with  
Disabilities at VCU  
[dcchildress@vcu.edu](mailto:dcchildress@vcu.edu)



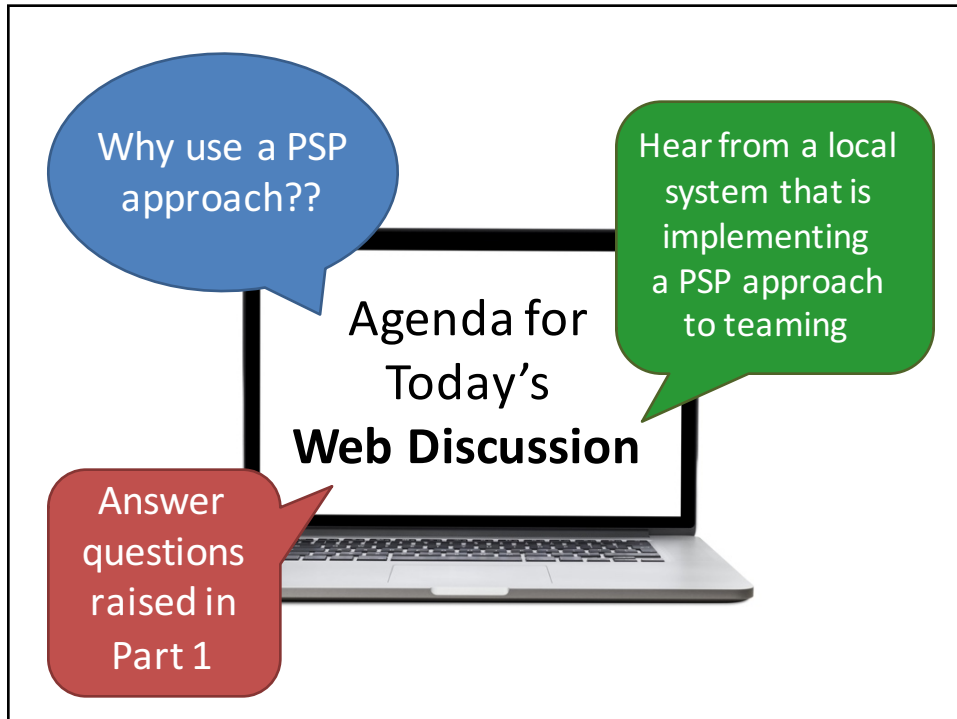
**Susan Sigler**

**Clinical Coordinator**  
Infant and Toddler Connection  
of Fairfax Falls Church  
[Susan.Sigler@fairfaxcounty.gov](mailto:Susan.Sigler@fairfaxcounty.gov)



**Tracy Shiplett**

**Physical Therapist**  
Therapy 4 Kids  
[tracyshiplett@t4konline.com](mailto:tracyshiplett@t4konline.com)



Why use a PSP approach??

Hear from a local system that is implementing a PSP approach to teaming

**Agenda for Today's Web Discussion**

Answer questions raised in Part 1

## WHERE ARE YOU LOCATED?



- a. Northern VA
- b. Central VA
- c. Southwest VA
- d. Coastal VA
- e. Outside of VA



A large red prohibition sign, consisting of a thick red circle with a diagonal line crossing through it from the top-left to the bottom-right.

### The Primary Provider Approach:

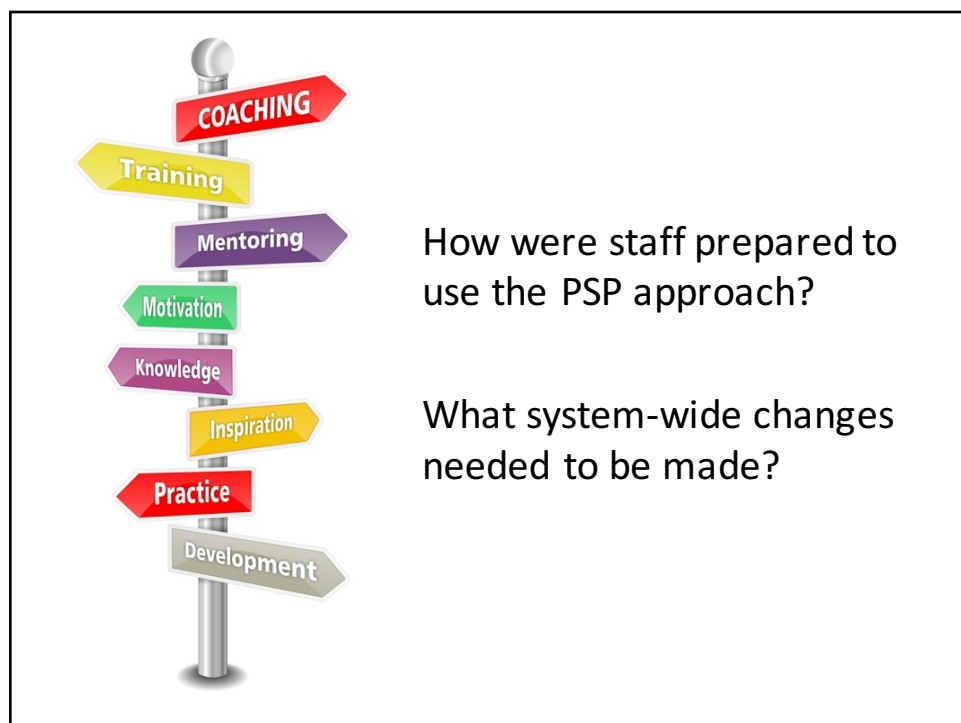
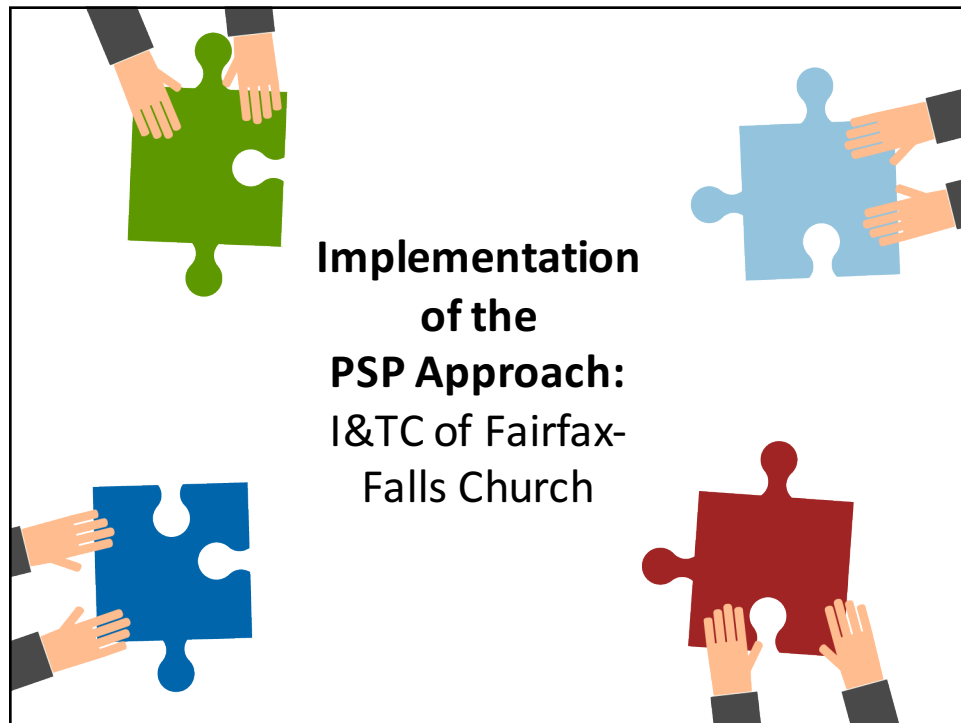
- **DOES NOT** mean working as a lone wolf
- **DOES NOT** mean each child can only have one provider
- **DOES NOT** mean lower frequencies for services
- **DOES NOT** cost less money
- **DOES NOT** mean that the same staff are always the primary provider

## KEY CHARACTERISTICS



How comfortable are you in the role of a primary service provider?

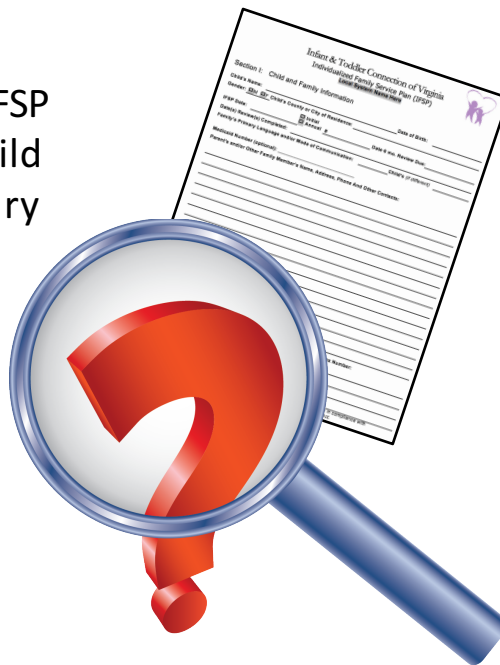




How does the IFSP team determine who the PSP will be?



What does the IFSP look like for a child who has a primary service provider and team support?



How is a primary service provider supported by other team members?



What does teaming look like?

How does billing work when using a PSP approach?

How do you document intervention provided using a PSP approach?



## So You Want to Start Using a PSP Approach?



## So You Want to Start Using a PSP Approach?





What questions do you have for  
**Susan** and **Tracy**?



**Dana Childress**

[dcchildress@vcu.edu](mailto:dcchildress@vcu.edu)



**Susan Sigler**

[Susan.Sigler@fairfaxcounty.gov](mailto:Susan.Sigler@fairfaxcounty.gov)



**Tracy Shiplett**

[tracyshiplett@t4konline.com](mailto:tracyshiplett@t4konline.com)

