

NOVEMBER 1, 2015 • TALKS ON TUESDAYS WEBINAR



My Life, My Community:
Medicaid Waiver Redesign

PRESENTED BY:
Erin Austin, LCSW & Barry Seaver

My Life, My Community

Partnership for People with Disabilities
Linking people. Changing lives.

Integrated Training Collaborative

VCU
VIRGINIA COMMONWEALTH UNIVERSITY

AUDIO DETAILS:
1-866-842-5779
Enter Code: 463-661-9330



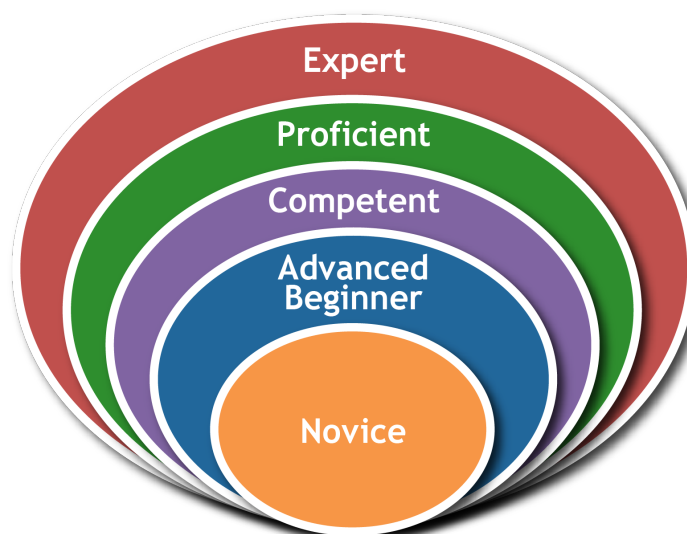
People with developmental disabilities living, working, and participating in their own communities is becoming the norm, **not the exception.**

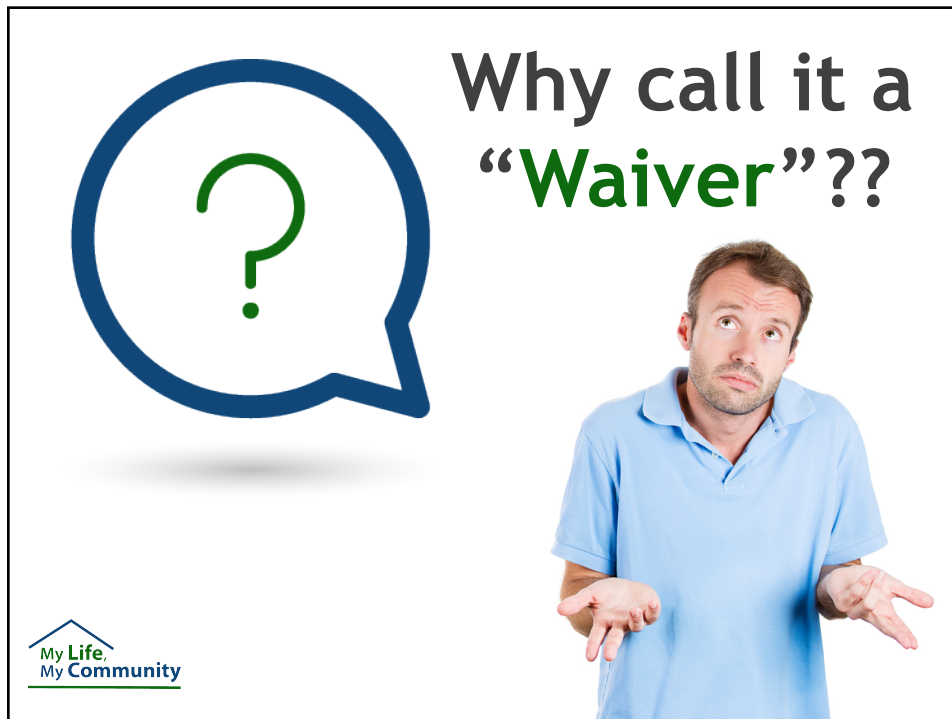


What we will cover today...

- Waiver Redesign Development
- Benefits of Waiver Redesign
- Amended Waiver information
- Single statewide priority-based Wait List, Eligibility, and Slot Assignments
- Services and Support options across all Developmental Disability (DD) Waivers

What is your comfort level of Medicaid Waivers?





Waiver Redesign Development

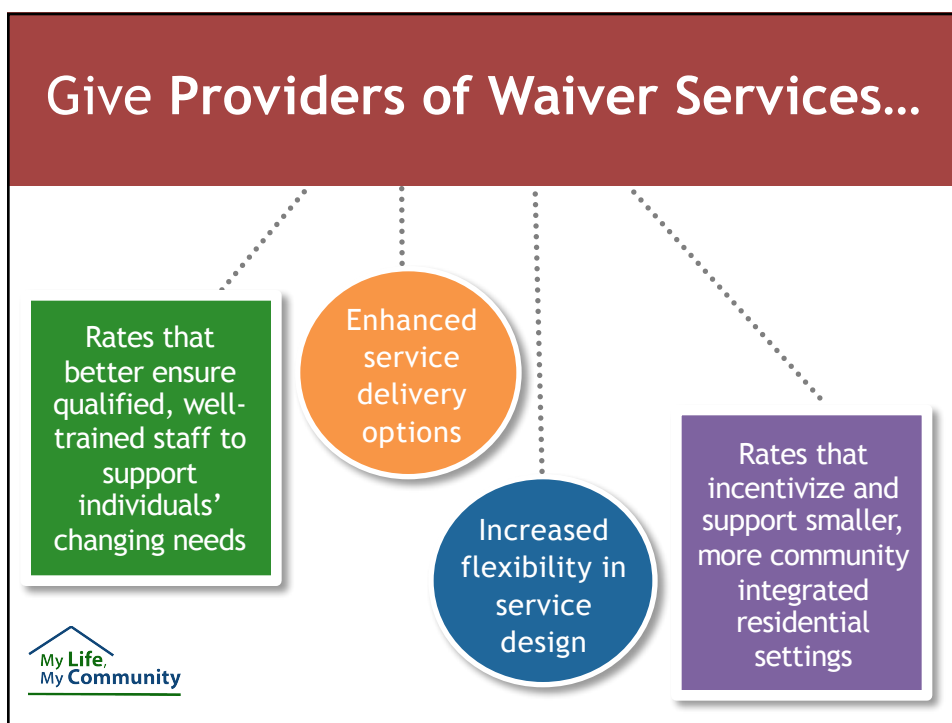
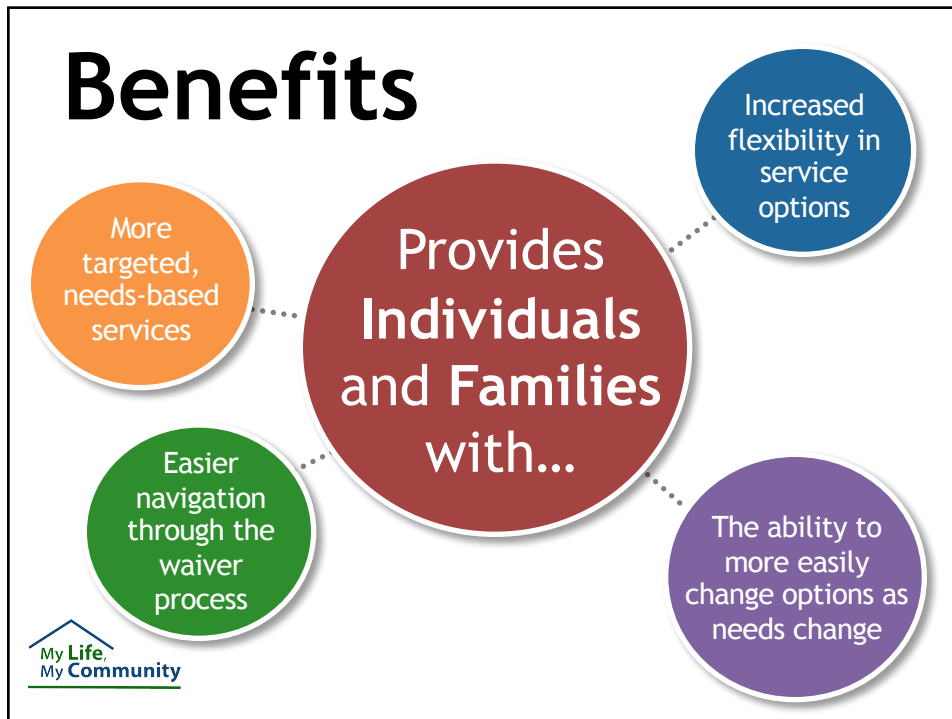


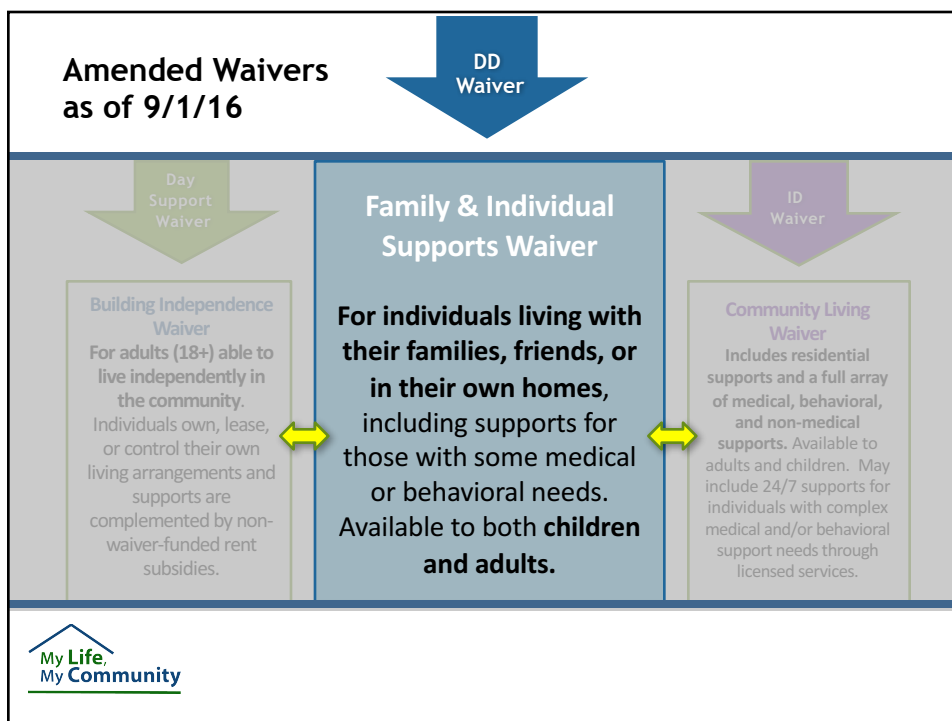
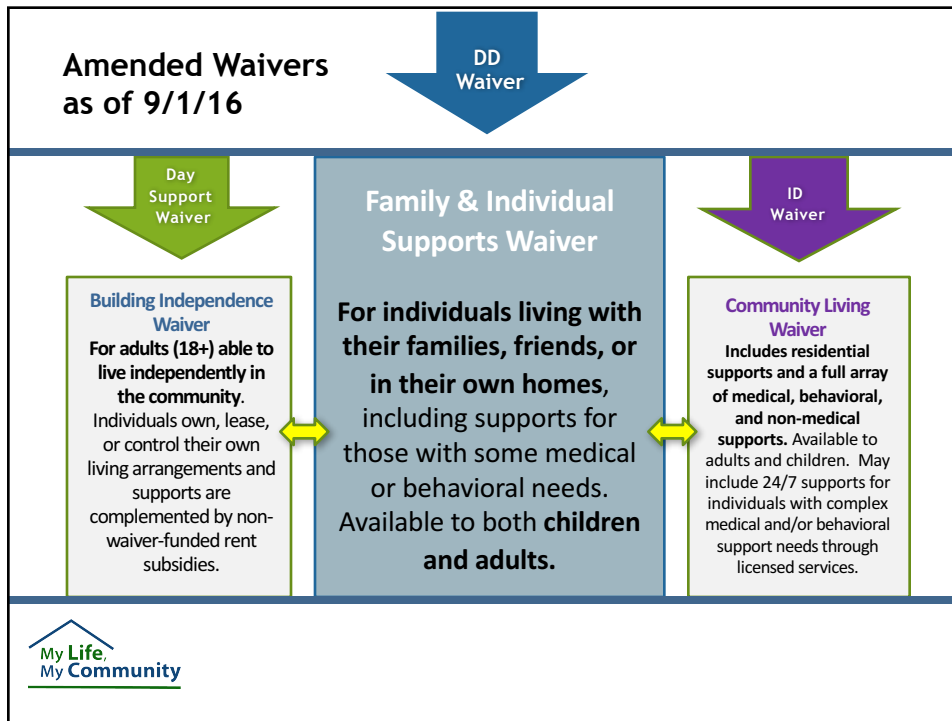
DMAS and DBHDS have worked diligently engaging the expertise of consultants and stakeholders across the Commonwealth in redesign efforts since 2013.



Families, advocates, self-advocates, providers and CSBs have joined with DBHDS to redesign Virginia's Developmental Disabilities (DD) Waiver system.

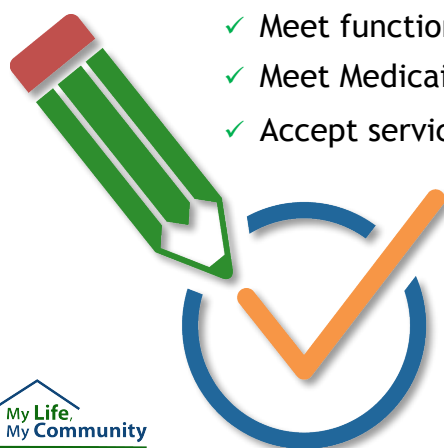






Eligibility

- ✓ Diagnosis of developmental disability (DD)
- ✓ Meet functional criteria
- ✓ Meet Medicaid financial eligibility
- ✓ Accept services within 30 days



My Life,
My Community

Eligibility

Developmental Disability

Federal Definition - 3 Main Criteria

- Originated at birth or during childhood (under age 22),
- Expected to continue indefinitely,
- Substantially restricts the individual's functioning in several major life activities.



My Life,
My Community

But what does this mean?

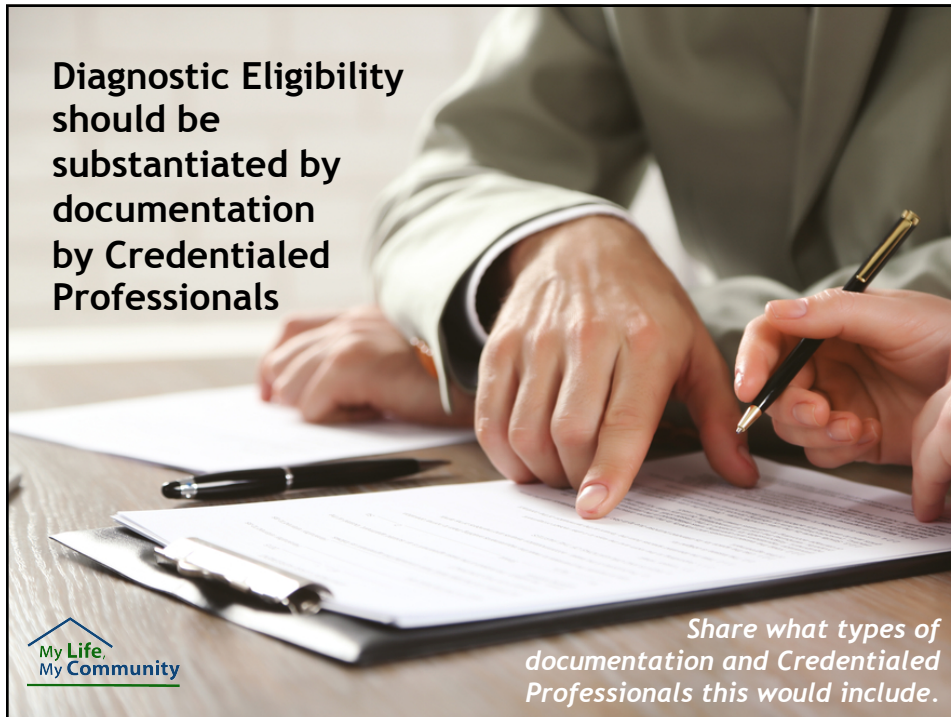


Use the Text box to write in diagnoses or conditions you think might qualify.

Examples of Developmental Disability Diagnoses


- Intellectual Disability
- Cerebral Palsy
- Fragile X
- Fetal Alcohol Syndrome
- Hearing loss
- Autism
- Visual impairment
- Traumatic Brain Injury up to the age of 22
- Developmental Delays in several areas
- Other diagnoses meeting the DD Definition





**Diagnostic Eligibility
should be
substantiated by
documentation
by Credentialed
Professionals**

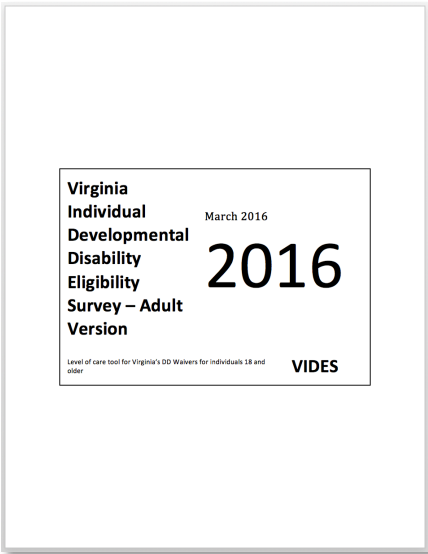
*Share what types of
documentation and Credentialed
Professionals this would include.*


 My Life,
My Community

**Eligibility:
Functional
Criteria**

The *VIDES* replaces the
Level of Functioning Survey

VIDES = Virginia Individual
Developmental Disabilities
Eligibility Survey



 My Life,
My Community

Eligibility: Functional Criteria



VIDES:

- Used initially and annually to confirm functional eligibility
- Includes versions for **infants**, children and adults.

The infant **VIDES** has 5 categories instead of 8. Infants must meet 2 of the 5 categories to be eligible.



Combined Statewide Waiver Wait List

A significant change in the amended waivers is the eligibility of individuals with developmental disabilities for services through any of the three amended waivers.



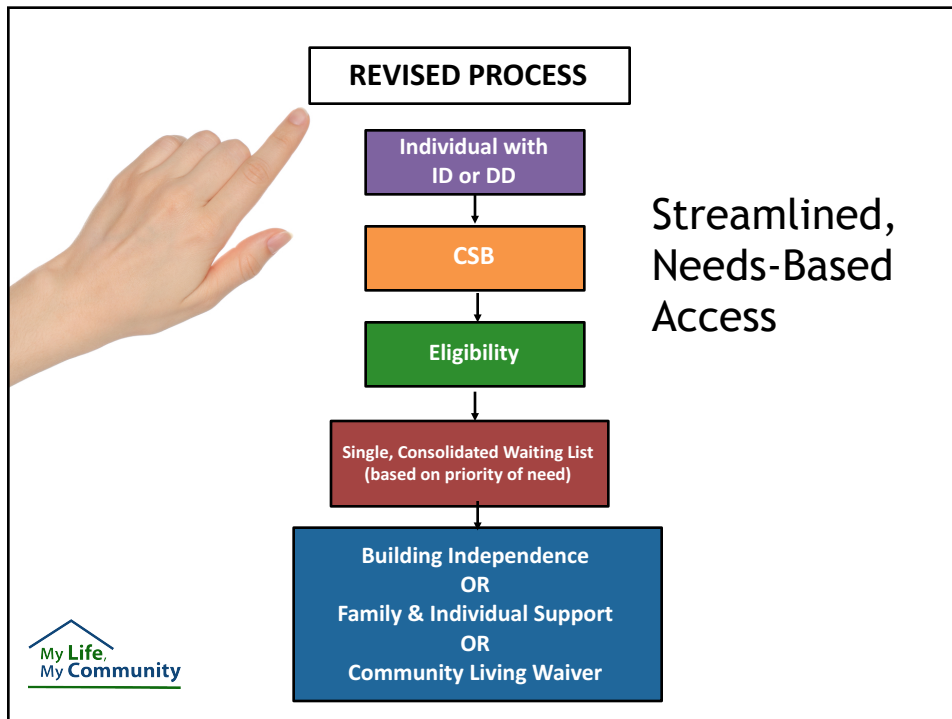
How many individuals
are on the DD Waiver
Waiting list?

- A. 1,973
- B. 5,464
- C. 10,886
- D. 19,028



As of 9/30.... **10,886**
individuals were on the
Combined Statewide
Waitlist

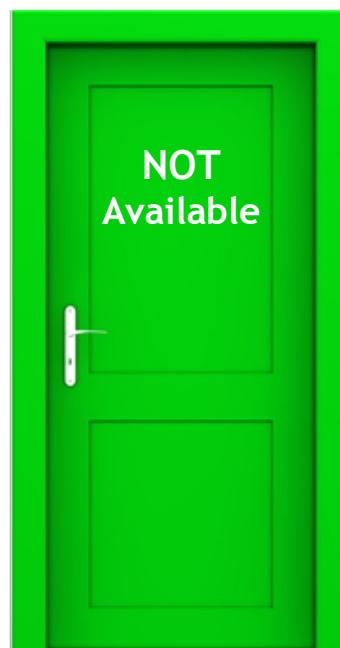


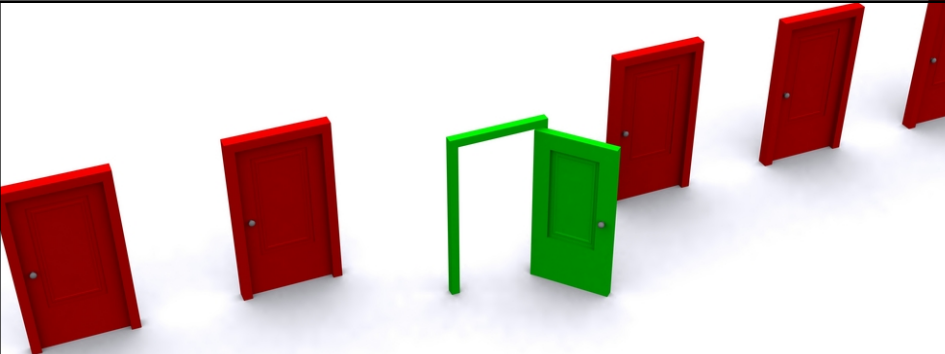


Waiver Slots

If a slot is **NOT** available, the CSB:


- Determines priority needs level
- Places the person's name on the waiting list
- Completes a *Critical Needs Summary* documenting the level of urgency

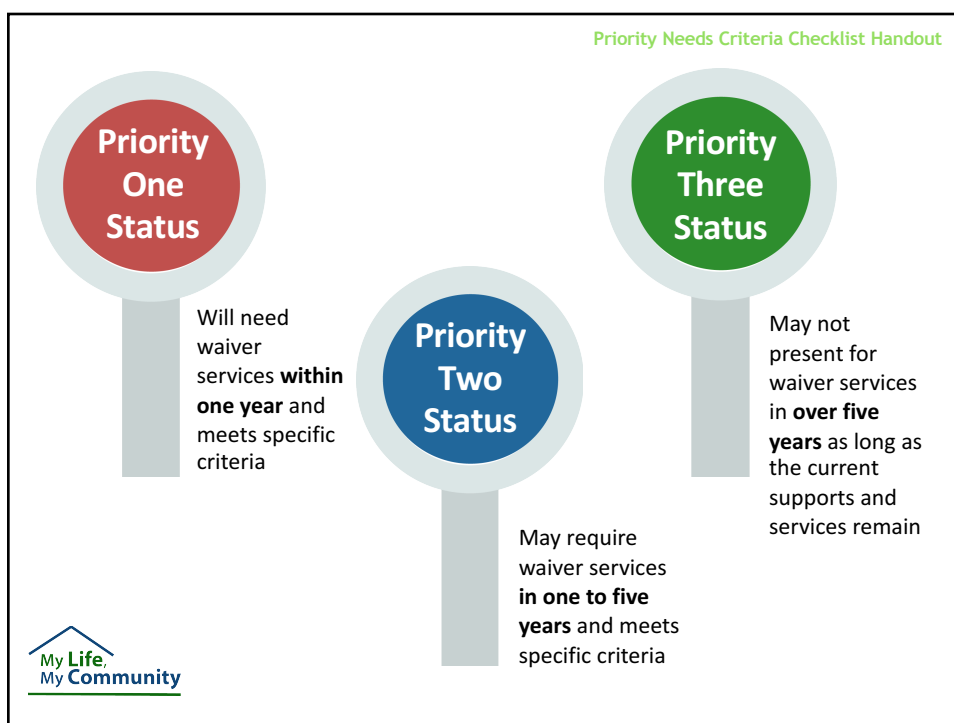




If a slot IS available, the individual must:

- Meet the Priority One criteria
- Accept the specific Waiver if it were offered
- Continue to meet diagnostic and functional eligibility requirements
- Be willing to accept services within 30 days

 My Life, My Community



Developmental Disability Waivers Services and Support Options 2016

Services & Support Options

Services and supports available in the DD Waivers can be considered across these categories.

Employment and Alternate Day Options



Self-Directed Options



Residential Options



Crisis Support Options



Medical and Behavioral Support Options



Additional Options



Waiver Services Most Utilized Birth to 5

- ▶ Personal Care Assistance (Consumer Directed Option available)
- ▶ Respite (Consumer Directed Option available)
- ▶ In-Home Residential Supports
- ▶ Nursing Services
- ▶ Crisis Services
- ▶ Assistive Technology
- ▶ Environmental Modifications
- ▶ Individual and Family Caregiver Training



Next Steps



Wrap-up and Questions?



Further Information

Each CSB/ BHA has Waiver Experts that have been trained by DBHDS

<http://www.dbhds.virginia.gov/individuals-and-families/community-services-boards>

Contact the Community Resources Consultants (CRC) at DBHDS

<http://www.dbhds.virginia.gov/professionals-and-service-providers/developmental-disability-services-for-providers/provider-development>

My Life, My Community

<http://www.mylifemycommunityvirginia.org/>

DBHDS Family Resource Consultants

Tonya Carr, tonya.carr@dbhds.virginia.gov, 804-894-0928

Benita Holland, Benita.holland@dbhds.virginia.gov, 804-201-3833





Erin Austin, LCSW

Local System Manager

ITC of Richmond

austine@rbha.org

Barry Seaver

Community Resource Consultant

Virginia Division of
Developmental Services

Barry.Seaver@dbhds.virginia.gov

